

# TRAILER BOATS®

## 2006 TOW GUIDE

Complete Towing Specs — Including All Engines  
and Axle Ratios — for More Than 750 New  
Pickups, SUVs and Vans



### ONLINE GOLDMINE

Looking for the maximum rating for any tow vehicle from 1991 on? Simply log onto *TrailerBoats.com* and click your way to a wealth of towing information. Our Searchable Database of Tow Ratings allows you to search by year, make, model and more. It's a uniquely helpful resource that's available 24/7/365.



**Added Bonus!**  
*Know Before You Go*  
**State Trailering Laws**

# 2006 Tow Ratings

Advances in engine technology and increased interior comfort highlight this year's new tow vehicles

Compiled by Robert Eckhardt



Ford Explorer

This year, while vehicle manufacturers resisted the urge to participate in a tow-ratings race similar to 2005 — when numbers soared like mercury on a hot day — there are still plenty of innovations in new tow vehicles for 2006.

One of the most noteworthy developments is the wider use of Displacement on Demand (DoD) powerplants in GM vehicles, such as the Chevrolet TrailBlazer. Its 5.3L V-8 pops on all eight cylinders during heavy load or brisk acceleration conditions, but scales back to as few as four cylinders under cruising situations, when there's little load on the engine.

In terms of new vehicles, Ford is debuting a revamped Explorer that features a reworked suspension for a more controlled and comfortable ride, new body styling and an optional multivalve

4.6L V-8 engine. On the pickup side, Dodge launches its gigantic Ram Mega Cab pickup — with the largest cab of any truck in its class for even more interior room. And Swedish carmaker Saab has come onto the tow vehicle scene with its V-8-powered midsize SUV, the swank 9-7X, that boasts a tow rating of 6500 pounds.

These are just a few of the dozens of new tow vehicles available to trailer-towing enthusiasts in 2006. For the most up-to-date listing of more than 750 new tow rigs, check out the following tow-rating charts. These were compiled from data supplied by the manufacturers at presstime and may change due to developments during the production year. We will provide updates as they become available. Happy towing. *Editors*

VEHICLE	ENGINE	TOW RATING
<b>ACURA</b>		
MDX	3.5L V6	3500 (z)
MDX	3.5L V6	4500 (b,z)
<b>BMW</b>		
BMW X5	All	5963 (x)
BMW X3	All	3500 (x)
<b>BUICK</b>		
Rainier 2WD	4.2L I6	6200 (u)
Rainier 2WD	4.2L I6	5700 (s)
Rainier 2WD	5.3L V8	6700 (s)
Rainier AWD	4.2L I6	6100 (u)
Rainier AWD	4.2L I6	5600 (s)
Rainier AWD	5.3L V8	6500 (s)
Rendezvous	3.5L V6	3500 (z)
Terraza	All	3500 (z)

VEHICLE	ENGINE	TOW RATING
<b>CADILLAC</b>		
Escalade 2WD	6.0L V8	7400
Escalade AWD	6.0L V8	8100
Escalade ESV	6.0L V8	7800
Escalade EXT	6.0L V8	7300
SRX	3.6L V6	2000
SRX	4.6L V8	4250

VEHICLE	ENGINE	TOW RATING
<b>CHEVROLET/GMC</b>		
Avalanche 1500 2WD	5.3L V8	7300 (q)
Avalanche 1500 2WD	5.3L V8	8200 (u)
Avalanche 1500 4WD	5.3L V8	7100 (q)
Avalanche 1500 4WD	5.3L V8	7900 (u)
Avalanche 2500 4WD	8.1L V8	10,200 (s)
Avalanche 2500 4WD	8.1L V8	12,000 (u)
Colorado/Canyon 2WD Reg. Cab	2.8L I4	2400 (m,s)
Colorado/Canyon 2WD Reg. Cab	2.8L I4	3500 (a,s)
Colorado/Canyon 2WD Reg. Cab	3.5L I5	3800 (m,s)
Colorado/Canyon 2WD Reg. Cab	3.5L I5	4000 (a,s)
Colorado/Canyon 2WD Ext. Cab	2.8L I4	2200 (m,s)
Colorado/Canyon 2WD Ext. Cab	2.8L I4	3200 (a,s)
Colorado/Canyon 2WD Ext. Cab	3.5L I5	3700 (m,s)
Colorado/Canyon 2WD Ext. Cab	3.5L I5	4000 (a,s)
Colorado/Canyon 2WD Crew Cab	2.8L I4	2000 (m,s)
Colorado/Canyon 2WD Crew Cab	2.8L I4	2900 (a,s)
Colorado/Canyon 2WD Crew Cab	3.5L I5	3100 (m,s)
Colorado/Canyon 2WD Crew Cab	3.5L I5	4000 (a,s)
Colorado/Canyon 4WD Reg. Cab	2.8L I4	2100 (m,s or u)
Colorado/Canyon 4WD Reg. Cab	2.8L I4	3100 (a,s or u)
Colorado/Canyon 4WD Reg. Cab	3.5L I5	3500 (m,s or u)
Colorado/Canyon 4WD Reg. Cab	3.5L I5	4000 (a,s or u)
Colorado/Canyon 4WD Ext. Cab	2.8L I4	2900 (a,s or u)
Colorado/Canyon 4WD Ext. Cab	3.5L I5	3400 (m,s or u)
Colorado/Canyon 4WD Ext. Cab	3.5L I5	4000 (a,s or u)
Colorado/Canyon 4WD Crew Cab	2.8L I4	2800 (a,s or u)
Colorado/Canyon 4WD Crew Cab	3.5L I5	4000 (a,s or u)

## KEY TO CHARTS

(a) Automatic transmission  
 (m) Manual transmission  
 (b) Tow rating for boat trailers only; other ratings apply to travel trailers  
 (x) Trailer brakes required  
 (z) Factory towing package required  
 (n) 3.21 axle ratio  
 (o) 3.23 axle ratio  
 (p) 3.31 axle ratio  
 (q) 3.42 axle ratio  
 (r) 3.55 axle ratio  
 (s) 3.73 axle ratio

(t) 3.92 axle ratio  
 (u) 4.10 axle ratio  
 (v) 4.30 axle ratio  
 (TD) Turbodiesel  
 (TDHO) Turbodiesel High Output

All tow limits stated in pounds; ratings for pickups that tow fifth-wheel trailers are generally higher than those shown here.

Unless otherwise listed, tow ratings for 1-ton pickups are the same for single-rear-wheel and dually models.

See your dealer for more information.

VEHICLE	ENGINE	TOW RATING	VEHICLE	ENGINE	TOW RATING
Equinox	3.4L V6	3500	Silverado/Sierra 2500 HD Reg. Cab 2WD Long Bed	6.6L V8 TD	12,000 (a or m, s)
Express/Savana 1500 Passenger Van Reg. Wheelbase	4.3L V6	6600 (q)	Silverado/Sierra 2500 HD Ext. Cab 2WD Standard Bed	6.0L V8	10,300 (a or m, u)
Express/Savana 2500 Passenger Van Reg. Wheelbase	4.8L V8	8000 (s)	Silverado/Sierra 2500 HD Ext. Cab 2WD Standard Bed	8.1L V8	12,000 (a or m, s or u)
Express/Savana 3500 Passenger Van Reg. & Ext Wheelbase	6.0L V8	10,000 (u)	Silverado/Sierra 2500 HD Ext. Cab 2WD Standard Bed	6.6L V8 TD	12,000 (a or m, s)
Express/Savana 3500 Passenger Van Reg. & Ext Wheelbase	6.6L V8 TD	10,000 (u)	Silverado/Sierra 2500 HD Ext. Cab 2WD Long Bed	6.0L V8	10,100 (a or m, u)
Silverado/Sierra 1500 Reg. Cab 2WD Standard Bed	4.3L V6	5000 (a,o,z)	Silverado/Sierra 2500 HD Ext. Cab 2WD Long Bed	8.1L V8	12,000 (a or m, s or u)
Silverado/Sierra 1500 Reg. Cab 2WD Standard Bed	4.3L V6	4000 (m,o,z)	Silverado/Sierra 2500 HD Ext. Cab 2WD Long Bed	6.6L V8 TD	12,000 (a or m, s)
Silverado/Sierra 1500 Reg. Cab 2WD Standard Bed	4.8L V8	6400 (a,o,z)	Silverado/Sierra 2500 HD Crew Cab 2WD Standard Bed	6.0L V8	10,100 (a or m, u)
Silverado/Sierra 1500 Reg. Cab 2WD Standard Bed	4.8L V8	4300 (m,o,z)	Silverado/Sierra 2500 HD Crew Cab 2WD Standard Bed	8.1L V8	12,000 (a or m, s or u)
Silverado/Sierra 1500 Reg. Cab 2WD Standard Bed	4.8L V8	7400 (a,s,z)	Silverado/Sierra 2500 HD Crew Cab 2WD Standard Bed	6.6L V8 TD	12,000 (a or m, s)
Silverado/Sierra 1500 Reg. Cab 2WD Standard Bed	4.8L V8	5400 (m,s,z)	Silverado/Sierra 2500 HD Crew Cab 2WD Long Bed	6.0L V8	10,000 (a or m, u)
Silverado/Sierra 1500 Reg. Cab 2WD Standard Bed	5.3L V8	7400 (a,o,z)	Silverado/Sierra 2500 HD Crew Cab 2WD Long Bed	8.1L V8	12,000 (a or m, s or u)
Silverado/Sierra 1500 Reg. Cab 2WD Standard Bed	5.3L V8	8400 (a,s,z)	Silverado/Sierra 2500 HD Crew Cab 2WD Long Bed	6.6L V8 TD	12,000 (a or m, s)
Silverado/Sierra 1500 Reg. Cab 2WD Long Bed	4.3L V6	4800 (a,o,z)	Silverado/Sierra 2500 HD Reg. Cab 4WD Long Bed	6.0L V8	10,300 (a or m, u)
Silverado/Sierra 1500 Reg. Cab 2WD Long Bed	4.3L V6	3800 (m,o,z)	Silverado/Sierra 2500 HD Reg. Cab 4WD Long Bed	8.1L V8	12,000 (a or m, s or u)
Silverado/Sierra 1500 Reg. Cab 2WD Long Bed	4.8L V8	6200 (a,o,z)	Silverado/Sierra 2500 HD Reg. Cab 4WD Long Bed	6.6L V8 TD	12,000 (a or m, s)
Silverado/Sierra 1500 Reg. Cab 2WD Long Bed	4.8L V8	4200 (m,o,z)	Silverado/Sierra 2500 HD Ext. Cab 4WD Standard Bed	6.0L V8	10,000 (a or m, u)
Silverado/Sierra 1500 Reg. Cab 2WD Long Bed	4.8L V8	7200 (a,s,z)	Silverado/Sierra 2500 HD Ext. Cab 4WD Standard Bed	8.1L V8	12,000 (a or m, s or u)
Silverado/Sierra 1500 Reg. Cab 2WD Long Bed	4.8L V8	5200 (m,s,z)	Silverado/Sierra 2500 HD Ext. Cab 4WD Standard Bed	6.6L V8 TD	12,000 (a or m, s)
Silverado/Sierra 1500 Reg. Cab 2WD Long Bed	5.3L V8	7200 (a,o,z)	Silverado/Sierra 2500 HD Ext. Cab 4WD Long Bed	6.0L V8	9900 (a or m, u)
Silverado/Sierra 1500 Reg. Cab 2WD Long Bed	5.3L V8	8200 (a,s,z)	Silverado/Sierra 2500 HD Ext. Cab 4WD Long Bed	8.1L V8	12,000 (a or m, s or u)
Silverado/Sierra 1500 Ext. Cab 2WD Standard Bed	4.3L V6	4600 (a,o,z)	Silverado/Sierra 2500 HD Ext. Cab 4WD Long Bed	6.6L V8 TD	12,000 (a or m, s)
Silverado/Sierra 1500 Ext. Cab 2WD Standard Bed	4.3L V6	3600 (m,o,z)	Silverado/Sierra 2500 HD Ext. Cab 4WD Long Bed	6.0L V8	9800 (a or m, u)
Silverado/Sierra 1500 Ext. Cab 2WD Standard Bed	4.3L V6	5100 (a,s,z)	Silverado/Sierra 2500 HD Crew Cab 4WD Standard Bed	8.1L V8	12,000 (a or m, s or u)
Silverado/Sierra 1500 Ext. Cab 2WD Standard Bed	4.8L V8	5900 (a,o,z)	Silverado/Sierra 2500 HD Crew Cab 4WD Standard Bed	6.6L V8 TD	12,000 (a or m, s)
Silverado/Sierra 1500 Ext. Cab 2WD Standard Bed	4.8L V8	3900 (m,o,z)	Silverado/Sierra 2500 HD Crew Cab 4WD Long Bed	6.0L V8	9700 (a or m, u)
Silverado/Sierra 1500 Ext. Cab 2WD Standard Bed	4.8L V8	6900 (a,s,z)	Silverado/Sierra 2500 HD Crew Cab 4WD Long Bed	8.1L V8	12,000 (a or m, s or u)
Silverado/Sierra 1500 Ext. Cab 2WD Standard Bed	4.8L V8	4900 (m,s,z)	Silverado/Sierra 2500 HD Crew Cab 4WD Long Bed	6.6L V8 TD	12,000 (a or m, s)
Silverado/Sierra 1500 Ext. Cab 2WD Standard Bed	5.3L V8	6900 (a,o,z)	Silverado/Sierra 2500 HD Crew Cab 4WD Long Bed	6.0L V8	10,300 (a or m, u)
Silverado/Sierra 1500 Ext. Cab 2WD Standard Bed	5.3L V8	7900 (a,s,z)	Silverado/Sierra 3500 HD Ext. Cab 2WD Long Bed	6.0L V8	9800 (a or m, u)
Silverado/Sierra 1500 Ext. Cab 2WD Short Bed	5.3L V8	7000 (a,o,z)	Silverado/Sierra 3500 HD Ext. Cab 2WD Long Bed	8.1L V8	12,000 (a or m, u)
Silverado/Sierra 1500 Ext. Cab 2WD Short Bed	5.3L V8	8000 (a,s,z)	Silverado/Sierra 3500 HD Ext. Cab 2WD Long Bed	6.6L V8 TD	12,000 (a or m, s)
Silverado/Sierra 1500 Ext. Cab 2WD Long Bed	4.8L V8	5800 (a,o,z)	Silverado/Sierra 3500 HD Ext. Cab 2WD Long Bed	6.0L V8	9600 (a or m, u)
Silverado/Sierra 1500 Ext. Cab 2WD Long Bed	4.8L V8	3800 (m,o,z)	Silverado/Sierra 3500 HD Crew Cab 2WD Long Bed	8.1L V8	12,000 (a or m, u)
Silverado/Sierra 1500 Ext. Cab 2WD Long Bed	4.8L V8	6800 (a,s,z)	Silverado/Sierra 3500 HD Crew Cab 2WD Long Bed	6.6L V8 TD	12,000 (a or m, s)
Silverado/Sierra 1500 Ext. Cab 2WD Long Bed	4.8L V8	4800 (m,s,z)	Silverado/Sierra 3500 HD Crew Cab 2WD Long Bed	6.0L V8	10,000 (a or m, u)
Silverado/Sierra 1500 Ext. Cab 2WD Long Bed	5.3L V8	6800 (a,o,z)	Silverado/Sierra 3500 HD Reg. Cab 4WD Long Bed	8.1L V8	12,000 (a or m, u)
Silverado/Sierra 1500 Ext. Cab 2WD Long Bed	5.3L V8	7800 (a,s,z)	Silverado/Sierra 3500 HD Reg. Cab 4WD Long Bed	6.6L V8 TD	12,000 (a or m, s)
Silverado/Sierra 1500 Crew Cab 2WD Standard Bed	6.0L V8	8300 (a,s,z)	Silverado/Sierra 3500 HD Reg. Cab 4WD Long Bed	6.0L V8	9600 (a or m, u)
Silverado/Sierra 1500 Crew Cab 2WD Standard Bed	6.0L V8	10,300 (a,u,z)	Silverado/Sierra 3500 HD Ext. Cab 4WD Long Bed	8.1L V8	12,000 (a or m, u)
Silverado/Sierra 1500 Crew Cab 2WD Short Bed	5.3L V8	6700 (a,o,z)	Silverado/Sierra 3500 HD Ext. Cab 4WD Long Bed	6.6L V8 TD	12,000 (a or m, s)
Silverado/Sierra 1500 Crew Cab 2WD Short Bed	5.3L V8	7700 (a,s,z)	Silverado/Sierra 3500 HD Crew Cab 4WD Long Bed	6.0L V8	9400 (a or m, u)
Silverado/Sierra 1500 Reg. Cab 4WD Standard Bed	4.3L V6	5100 (a,s,z)	Silverado/Sierra 3500 HD Crew Cab 4WD Long Bed	8.1L V8	12,000 (a or m, u)
Silverado/Sierra 1500 Reg. Cab 4WD Standard Bed	4.3L V6	4100 (m,s,z)	Silverado/Sierra 3500 HD Crew Cab 4WD Long Bed	6.6L V8 TD	12,000 (a or m, s)
Silverado/Sierra 1500 Reg. Cab 4WD Standard Bed	4.8L V8	7100 (a,q or s,z)	SSR	6.0L V8	2500
Silverado/Sierra 1500 Reg. Cab 4WD Standard Bed	4.8L V8	5100 (m,q or s,z)	Suburban/Yukon XL 1500 2WD	5.3L V8	7500 (q)
Silverado/Sierra 1500 Reg. Cab 4WD Standard Bed	4.8L V8	8100 (a,u,z)	Suburban/Yukon XL 1500 2WD	5.3L V8	8500 (u)
Silverado/Sierra 1500 Reg. Cab 4WD Standard Bed	4.8L V8	6100 (m,u,z)	Suburban/Yukon XL 1500 4WD	5.3L V8	7200 (q)
Silverado/Sierra 1500 Reg. Cab 4WD Standard Bed	5.3L V8	8100 (a,q or s,z)	Suburban/Yukon XL 1500 4WD	5.3L V8	8200 (u)
Silverado/Sierra 1500 Reg. Cab 4WD Standard Bed	5.3L V8	9100 (a,u,z)	Suburban/Yukon XL 2500 2WD	6.0L V8	7900 (s)
Silverado/Sierra 1500 Reg. Cab 4WD Long Bed	4.3L V6	5000 (a,s,z)	Suburban/Yukon XL 2500 2WD	6.0L V8	9900 (u)
Silverado/Sierra 1500 Reg. Cab 4WD Long Bed	4.3L V6	4000 (m,s,z)	Suburban/Yukon XL 2500 2WD	8.1L V8	10,600 (s)
Silverado/Sierra 1500 Reg. Cab 4WD Long Bed	4.8L V8	6900 (a,q or s,z)	Suburban/Yukon XL 2500 2WD	8.1L V8	12,000 (u)
Silverado/Sierra 1500 Reg. Cab 4WD Long Bed	4.8L V8	4900 (m,q or s,z)	Suburban/Yukon XL 2500 4WD	6.0L V8	7600 (s)
Silverado/Sierra 1500 Reg. Cab 4WD Long Bed	4.8L V8	7900 (a,u,z)	Suburban/Yukon XL 2500 4WD	6.0L V8	9600 (u)
Silverado/Sierra 1500 Reg. Cab 4WD Long Bed	4.8L V8	5900 (m,u,z)	Suburban/Yukon XL 2500 4WD	8.1L V8	10,300 (s)
Silverado/Sierra 1500 Reg. Cab 4WD Long Bed	5.3L V8	7900 (a,q or s,z)	Suburban/Yukon XL 2500 4WD	8.1L V8	12,000 (u)
Silverado/Sierra 1500 Reg. Cab 4WD Long Bed	5.3L V8	8900 (a,u,z)	Yukon/Tahoe 2WD	4.8L V8	5700 (o)
Silverado/Sierra 1500 Ext. Cab 4WD Standard Bed	4.8L V8	6700 (a,q or s,z)			
Silverado/Sierra 1500 Ext. Cab 4WD Standard Bed	4.8L V8	4700 (m,q or s,z)			
Silverado/Sierra 1500 Ext. Cab 4WD Standard Bed	4.8L V8	7700 (a,u,z)			
Silverado/Sierra 1500 Ext. Cab 4WD Standard Bed	4.8L V8	5700 (m,u,z)			
Silverado/Sierra 1500 Ext. Cab 4WD Standard Bed	5.3L V8	7700 (a,q or s,z)			
Silverado/Sierra 1500 Ext. Cab 4WD Standard Bed	5.3L V8	8700 (a,u,z)			
Silverado/Sierra 1500 Ext. Cab 4WD Long Bed	4.8L V8	6500 (a,q or s,z)			
Silverado/Sierra 1500 Ext. Cab 4WD Long Bed	4.8L V8	4500 (m,q or s,z)			
Silverado/Sierra 1500 Ext. Cab 4WD Long Bed	4.8L V8	7500 (a,u,z)			
Silverado/Sierra 1500 Ext. Cab 4WD Long Bed	4.8L V8	5500 (m,u,z)			
Silverado/Sierra 1500 Ext. Cab 4WD Long Bed	5.3L V8	7500 (a,q or s,z)			
Silverado/Sierra 1500 Ext. Cab 4WD Long Bed	5.3L V8	8500 (a,u,z)			
Silverado/Sierra 1500 Ext. Cab 4WD Short Bed	5.3L V8	7700 (a,q or s,z)			
Silverado/Sierra 1500 Ext. Cab 4WD Short Bed	5.3L V8	8700 (a,u,z)			
Silverado/Sierra 1500 Crew Cab 4WD Standard Bed	6.0L V8	7900 (a,s,z)			
Silverado/Sierra 1500 Crew Cab 4WD Standard Bed	6.0L V8	9900 (a,u,z)			
Silverado/Sierra 1500 Crew Cab 4WD Short Bed	5.3L V8	7400 (a,q or s,z)			
Silverado/Sierra 1500 Crew Cab 4WD Short Bed	5.3L V8	8400 (a,u,z)			
Silverado/Sierra 2500 HD Reg. Cab 2WD Long Bed	6.0L V8	10,500 (a or m, u)			
Silverado/Sierra 2500 HD Reg. Cab 2WD Long Bed	8.1L V8	12,000 (a or m, s or u)			



**GM 6.6L Duramax Turbodiesel**

VEHICLE	ENGINE	TOW RATING
Yukon/Tahoe 2WD	4.8L V8	6700 (s)
Yukon/Tahoe 2WD	5.3L V8	6700 (o)
Yukon/Tahoe 2WD	5.3L V8	7700 (s)
Yukon/Tahoe 4WD	4.8L V8	6500 (q)
Yukon/Tahoe 4WD	4.8L V8	7500 (u)
Yukon/Tahoe 4WD	5.3L V8	7500 (q)
Yukon/Tahoe 4WD	5.3L V8	7700 (u)
Yukon Denali AWD	6.0L V8	8100
Yukon XL Denali AWD	6.0L V8	7900
TrailBlazer/Envoy 2WD	4.2L I6	6300
TrailBlazer/Envoy 2WD	5.3L V8	6700
TrailBlazer/Envoy 4WD	4.2L I6	6100
TrailBlazer/Envoy 4WD	5.3L V8	6500
TrailBlazer EXT/Envoy XL 2WD	4.2L I6	6000
TrailBlazer EXT/Envoy XL 2WD	5.3L V8	7000
TrailBlazer EXT/Envoy XL 4WD	4.2L I6	5800
TrailBlazer EXT/Envoy XL 4WD	5.3L V8	6500
TrailBlazer SS 2WD	6.0L V8	6700
TrailBlazer SS 4WD	6.0L V8	6500
Uplander	3.5L V6	3500 (z)

**CHRYSLER**

300	3.5L V6	2000
300	5.7L V8	2000
Pacifica	3.5L V6	3500
Pacifica	3.8L V6	3500
Town & Country	3.3L V6	3600 (z)
Town & Country	3.8L V6	3800 (z)

**DODGE CARS**

Caravan/Grand Caravan	3.3L V6	3600 (z)
Caravan/Grand Caravan	3.8L V6	3800 (z)
Charger	3.5L V6	2000
Charger	5.7L V8	2000
Magnum	3.5L V6	2000
Magnum	5.7L V8	2000
Magnum	5.7L V8	3800 (z)
Magnum SRT8	6.1L V8	3800

**DODGE TRUCKS**

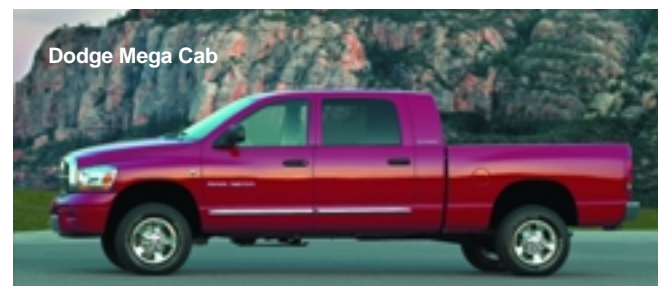
Dakota Club Cab 2WD	3.7L V6	3300 (m,n)
Dakota Club Cab 2WD	3.7L V6	4100 (m,r)
Dakota Club Cab 2WD	3.7L V6	4600 (a,r)
Dakota Club Cab 2WD	3.7L V6	4900 (a,t)
Dakota Club Cab 2WD	4.7L V8	5000 (m,n)
Dakota Club Cab 2WD	4.7L V8	5500 (m,r)
Dakota Club Cab 2WD	4.7L V8	5950 (a,r)
Dakota Club Cab 2WD	4.7L V8	7150 (a,t)
Dakota Club Cab 4WD	3.7L V6	3900 (m,r)
Dakota Club Cab 4WD	3.7L V6	4400 (a,r)
Dakota Club Cab 4WD	3.7L V6	4700 (a,t)
Dakota Club Cab 4WD	4.7L V8	5350 (m,r)
Dakota Club Cab 4WD	4.7L V8	5800 (a,r)
Dakota Club Cab 4WD	4.7L V8	7000 (a,t)
Dakota Quad Cab 2WD	3.7L V6	3150 (m,n)
Dakota Quad Cab 2WD	3.7L V6	3950 (m,r)
Dakota Quad Cab 2WD	3.7L V6	4500 (a,r)
Dakota Quad Cab 2WD	3.7L V6	4800 (a,t)
Dakota Quad Cab 2WD	4.7L V8	4900 (m,n)
Dakota Quad Cab 2WD	4.7L V8	5400 (m,r)
Dakota Quad Cab 2WD	4.7L V8	5850 (a,r)
Dakota Quad Cab 2WD	4.7L V8	7050 (a,t)
Dakota Quad Cab 4WD	3.7L V6	3800 (m,r)
Dakota Quad Cab 4WD	3.7L V6	4300 (a,r)
Dakota Quad Cab 4WD	3.7L V6	4600 (a,t)
Dakota Quad Cab 4WD	4.7L V8	5250 (m,r)
Dakota Quad Cab 4WD	4.7L V8	5650 (a,r)
Dakota Quad Cab 4WD	4.7L V8	6850 (a,t)
Durango SLT 2WD	3.7L V6	3650 (a,t)
Durango SLT 2WD	4.7L V8	5900 (a,r)
Durango SLT 2WD	4.7L V8	7400 (a,t)
Durango SLT 2WD	5.7L V8	7350 (a,r)
Durango SLT 2WD	5.7L V8	8950 (a,t)
Durango SLT 4WD	4.7L V8	5700 (a,r)
Durango SLT 4WD	4.7L V8	7200 (a,t)
Durango SLT 4WD	5.7L V8	7150 (a,r)
Durango SLT 4WD	5.7L V8	8650 (a,t)
Ram 1500 Reg. Cab 2WD ST Short Bed	3.7L V6	3300 (m,n)
Ram 1500 Reg. Cab 2WD ST Short Bed	3.7L V6	3300 (m,r)



Chevy TrailBlazer

VEHICLE	ENGINE	TOW RATING
Ram 1500 Reg. Cab 2WD ST Short Bed	3.7L V6	3800 (a,t)
Ram 1500 Reg. Cab 2WD ST Short Bed	4.7L V8	4200 (m,n)
Ram 1500 Reg. Cab 2WD ST Short Bed	4.7L V8	5700 (m,t)
Ram 1500 Reg. Cab 2WD ST Short Bed	4.7L V8	6650 (a,r)
Ram 1500 Reg. Cab 2WD ST Short Bed	4.7L V8	7650 (a,t)
Ram 1500 Reg. Cab 2WD ST Short Bed	5.7L V8	8100 (a,r)
Ram 1500 Reg. Cab 2WD ST Short Bed	5.7L V8	9100 (a,t)
Ram 1500 Reg. Cab 2WD ST Long Bed	3.7L V6	3050 (m,n)
Ram 1500 Reg. Cab 2WD ST Long Bed	3.7L V6	3050 (m,r)
Ram 1500 Reg. Cab 2WD ST Long Bed	3.7L V6	3550 (a,t)
Ram 1500 Reg. Cab 2WD ST Long Bed	4.7L V8	4000 (m,n)
Ram 1500 Reg. Cab 2WD ST Long Bed	4.7L V8	5500 (m,t)
Ram 1500 Reg. Cab 2WD ST Long Bed	4.7L V8	6450 (a,r)
Ram 1500 Reg. Cab 2WD ST Long Bed	4.7L V8	7450 (a,t)
Ram 1500 Reg. Cab 2WD ST Long Bed	5.7L V8	7900 (a,r)
Ram 1500 Reg. Cab 2WD ST Long Bed	5.7L V8	8900 (a,t)
Ram 1500 Reg. Cab 4WD ST Short Bed	4.7L V8	4450 (m,r)
Ram 1500 Reg. Cab 4WD ST Short Bed	4.7L V8	5450 (m,t)
Ram 1500 Reg. Cab 4WD ST Short Bed	4.7L V8	6400 (a,r)
Ram 1500 Reg. Cab 4WD ST Short Bed	4.7L V8	7400 (a,t)
Ram 1500 Reg. Cab 4WD ST Short Bed	5.7L V8	7800 (a,r)
Ram 1500 Reg. Cab 4WD ST Short Bed	5.7L V8	8800 (a,t)
Ram 1500 Reg. Cab 4WD ST Long Bed	4.7L V8	4250 (m,r)
Ram 1500 Reg. Cab 4WD ST Long Bed	4.7L V8	5250 (m,t)
Ram 1500 Reg. Cab 4WD ST Long Bed	4.7L V8	6200 (a,r)
Ram 1500 Reg. Cab 4WD ST Long Bed	4.7L V8	7200 (a,t)
Ram 1500 Reg. Cab 4WD ST Long Bed	5.7L V8	7600 (a,r)
Ram 1500 Reg. Cab 4WD ST Long Bed	5.7L V8	8600 (a,t)
Ram 1500 Quad Cab 2WD ST Short Bed	3.7L V6	2900 (m,n or r)
Ram 1500 Quad Cab 2WD ST Short Bed	3.7L V6	3400 (a,t)
Ram 1500 Quad Cab 2WD ST Short Bed	4.7L V8	3850 (m,n)
Ram 1500 Quad Cab 2WD ST Short Bed	4.7L V8	5350 (m,t)
Ram 1500 Quad Cab 2WD ST Short Bed	4.7L V8	6300 (a,r)
Ram 1500 Quad Cab 2WD ST Short Bed	4.7L V8	7300 (a,t)
Ram 1500 Quad Cab 2WD ST Short Bed	5.7L V8	7700 (a,r)
Ram 1500 Quad Cab 2WD ST Short Bed	5.7L V8	8700 (a,t)
Ram 1500 Quad Cab 2WD ST Long Bed	4.7L V8	3700 (m,n)
Ram 1500 Quad Cab 2WD ST Long Bed	4.7L V8	5200 (m,t)
Ram 1500 Quad Cab 2WD ST Long Bed	4.7L V8	6100 (a,r)
Ram 1500 Quad Cab 2WD ST Long Bed	4.7L V8	7100 (a,t)
Ram 1500 Quad Cab 2WD ST Long Bed	5.7L V8	7550 (a,r)
Ram 1500 Quad Cab 2WD ST Long Bed	5.7L V8	8550 (a,t)
Ram 1500 Quad Cab 4WD ST Short Bed	4.7L V8	4100 (m,r)
Ram 1500 Quad Cab 4WD ST Short Bed	4.7L V8	5100 (m,t)
Ram 1500 Quad Cab 4WD ST Short Bed	4.7L V8	6050 (a,r)
Ram 1500 Quad Cab 4WD ST Short Bed	4.7L V8	7050 (a,t)
Ram 1500 Quad Cab 4WD ST Short Bed	5.7L V8	7500 (a,r)
Ram 1500 Quad Cab 4WD ST Short Bed	5.7L V8	8500 (a,t)
Ram 1500 Quad Cab 4WD ST Long Bed	4.7L V8	4950 (m,t)
Ram 1500 Quad Cab 4WD ST Long Bed	4.7L V8	6900 (a,t)
Ram 1500 Quad Cab 4WD ST Long Bed	5.7L V8	8250 (a,t)
Ram 1500 Mega Cab 2WD STL Short Bed	5.7L V8	7750 (a,s)
Ram 1500 Mega Cab 2WD STL Short Bed	5.7L V8	8750 (a,u)
Ram 1500 Mega Cab 4WD STL Short Bed	5.7L V8	7400 (a,s)
Ram 1500 Mega Cab 4WD STL Short Bed	5.7L V8	8400 (a,u)
Ram HD 2500 Reg. Cab 2WD ST Long Bed	5.7L V8	9400 (m,s)
Ram HD 2500 Reg. Cab 2WD ST Long Bed	5.7L V8	11,400 (m,u)
Ram HD 2500 Reg. Cab 2WD ST Long Bed	5.7L V8	9450 (a,s)
Ram HD 2500 Reg. Cab 2WD ST Long Bed	5.7L V8	11,450 (a,u)
Ram HD 2500 Reg. Cab 2WD ST Long Bed	5.9L V8 24V TDHO	13,600 (m,s)
Ram HD 2500 Reg. Cab 2WD ST Long Bed	5.9L V8 24V TDHO	13,700 (a,s or u)
Ram HD 2500 Reg. Cab 4WD ST Long Bed	5.7L V8	8950 (m,s)

VEHICLE	ENGINE	TOW RATING
Ram HD 2500 Reg. Cab 4WD ST Long Bed	5.7L V8	10,950 (m,u)
Ram HD 2500 Reg. Cab 4WD ST Long Bed	5.7L V8	9000 (a,s)
Ram HD 2500 Reg. Cab 4WD ST Long Bed	5.7L V8	11,000 (a,u)
Ram HD 2500 Reg. Cab 4WD ST Long Bed	5.9L V8 24V TDHO	13,200 (m,s)
Ram HD 2500 Reg. Cab 4WD ST Long Bed	5.9L V8 24V TDHO	13,250 (a,s or u)
Ram HD 2500 Quad Cab 2WD ST Short Bed	5.7L V8	9050 (m,s)
Ram HD 2500 Quad Cab 2WD ST Short Bed	5.7L V8	11,050 (m,u)
Ram HD 2500 Quad Cab 2WD ST Short Bed	5.7L V8	9100 (a,s)
Ram HD 2500 Quad Cab 2WD ST Short Bed	5.7L V8	11,100 (a,u)
Ram HD 2500 Quad Cab 2WD ST Short Bed	5.9L V8 24V TDHO	13,300 (m,s)
Ram HD 2500 Quad Cab 2WD ST Short Bed	5.9L V8 24V TDHO	13,400 (a,s or u)
Ram HD 2500 Quad Cab 2WD ST Long Bed	5.7L V8	9000 (m,s)
Ram HD 2500 Quad Cab 2WD ST Long Bed	5.7L V8	11,000 (m,u)
Ram HD 2500 Quad Cab 2WD ST Long Bed	5.7L V8	9050 (a,s)
Ram HD 2500 Quad Cab 2WD ST Long Bed	5.7L V8	11,050 (a,u)
Ram HD 2500 Quad Cab 2WD ST Long Bed	5.9L V8 24V TDHO	13,250 (m,s)
Ram HD 2500 Quad Cab 2WD ST Long Bed	5.9L V8 24V TDHO	13,300 (a,s or u)
Ram HD 2500 Quad Cab 4WD ST Short Bed	5.7L V8	8650 (m,s)
Ram HD 2500 Quad Cab 4WD ST Short Bed	5.7L V8	10,650 (m,u)
Ram HD 2500 Quad Cab 4WD ST Short Bed	5.7L V8	8700 (a,s)
Ram HD 2500 Quad Cab 4WD ST Short Bed	5.7L V8	10,700 (a,u)
Ram HD 2500 Quad Cab 4WD ST Short Bed	5.9L V8 24V TDHO	12,850 (m,s)
Ram HD 2500 Quad Cab 4WD ST Short Bed	5.9L V8 24V TDHO	12,950 (a,s or u)
Ram HD 2500 Quad Cab 4WD ST Long Bed	5.7L V8	8600 (m,s)
Ram HD 2500 Quad Cab 4WD ST Long Bed	5.7L V8	10,600 (m,u)
Ram HD 2500 Quad Cab 4WD ST Long Bed	5.7L V8	8650 (a,s)
Ram HD 2500 Quad Cab 4WD ST Long Bed	5.7L V8	10,650 (a,u)
Ram HD 2500 Quad Cab 4WD ST Long Bed	5.9L V8 24V TDHO	12,800 (m,s)
Ram HD 2500 Quad Cab 4WD ST Long Bed	5.9L V8 24V TDHO	12,850 (a,s or u)
Ram HD 2500 Mega Cab 2WD STL Short Bed	5.7L V8	8700 (a,s)
Ram HD 2500 Mega Cab 2WD STL Short Bed	5.7L V8	10,700 (a,u)
Ram HD 2500 Mega Cab 2WD STL Short Bed	5.9L V8 24V TDHO	12,950 (m,s)
Ram HD 2500 Mega Cab 2WD STL Short Bed	5.9L V8 24V TDHO	13,000 (a,s or u)
Ram HD 2500 Mega Cab 4WD STL Short Bed	5.7L V8	8150 (a,s)
Ram HD 2500 Mega Cab 4WD STL Short Bed	5.7L V8	10,150 (a,u)
Ram HD 2500 Mega Cab 4WD STL Short Bed	5.9L V8 24V TDHO	12,350 (m,s)
Ram HD 2500 Mega Cab 4WD STL Short Bed	5.9L V8 24V TDHO	12,400 (a,s or u)
Ram HD 3500 Reg. Cab 2WD ST Long Bed	5.7L V8	10,850 (m,u)
Ram HD 3500 Reg. Cab 2WD ST Long Bed	5.7L V8	10,900 (a,u)
Ram HD 3500 Reg. Cab 2WD ST Long Bed	5.9L V8 24V TDHO	16,150 (m,s)
Ram HD 3500 Reg. Cab 2WD ST Long Bed	5.9L V8 24V TDHO	14,250 (a,s)
Ram HD 3500 Reg. Cab 2WD ST Long Bed	5.9L V8 24V TDHO	16,250 (a,u)
Ram HD 3500 Reg. Cab 4WD ST Long Bed	5.7L V8	10,400 (m,u)
Ram HD 3500 Reg. Cab 4WD ST Long Bed	5.7L V8	10,450 (a,u)
Ram HD 3500 Reg. Cab 4WD ST Long Bed	5.9L V8 24V TDHO	15,700 (m,s)
Ram HD 3500 Reg. Cab 4WD ST Long Bed	5.9L V8 24V TDHO	13,750 (a,s)
Ram HD 3500 Reg. Cab 4WD ST Long Bed	5.9L V8 24V TDHO	15,750 (a,u)
Ram HD 3500 Quad Cab 2WD ST Short Bed	5.9L V8 24V TDHO	16,050 (m,s)
Ram HD 3500 Quad Cab 2WD ST Short Bed	5.9L V8 24V TDHO	14,150 (a,s)
Ram HD 3500 Quad Cab 2WD ST Short Bed	5.9L V8 24V TDHO	16,150 (a,u)
Ram HD 3500 Quad Cab 2WD ST Long Bed	5.7L V8	10,500 (m,u)
Ram HD 3500 Quad Cab 2WD ST Long Bed	5.7L V8	10,550 (a,u)
Ram HD 3500 Quad Cab 2WD ST Long Bed	5.9L V8 24V TDHO	15,800 (m,s)
Ram HD 3500 Quad Cab 2WD ST Long Bed	5.9L V8 24V TDHO	13,850 (a,s)
Ram HD 3500 Quad Cab 2WD ST Long Bed	5.9L V8 24V TDHO	15,850 (a,u)
Ram HD 3500 Quad Cab 2WD ST Long Bed	5.9L V8 24V TDHO	15,800 (m,s)
Ram HD 3500 Quad Cab 4WD ST Short Bed	5.9L V8 24V TDHO	13,850 (a,s)
Ram HD 3500 Quad Cab 4WD ST Short Bed	5.9L V8 24V TDHO	15,850 (a,u)
Ram HD 3500 Quad Cab 4WD ST Short Bed	5.7L V8	10,050 (m,u)
Ram HD 3500 Quad Cab 4WD ST Long Bed	5.7L V8	10,100 (a,u)
Ram HD 3500 Quad Cab 4WD ST Long Bed	5.9L V8 24V TDHO	15,350 (m,s)
Ram HD 3500 Quad Cab 4WD ST Long Bed	5.9L V8 24V TDHO	13,400 (a,s)
Ram HD 3500 Quad Cab 4WD ST Long Bed	5.9L V8 24V TDHO	15,400 (a,u)
Ram HD 3500 Mega Cab 2WD STL Short Bed	5.9L V8 24V TDHO	15,800 (m,s)
Ram HD 3500 Mega Cab 2WD STL Short Bed	5.9L V8 24V TDHO	13,900 (a,s)



Dodge Mega Cab

VEHICLE	ENGINE	TOW RATING
Ram HD 3500 Mega Cab 2WD STL Short Bed	5.9L V8 24V TDHO	15,900 (a,u)
Ram HD 3500 Mega Cab 4WD STL Short Bed	5.9L V8 24V TDHO	15,400 (m,s)
Ram HD 3500 Mega Cab 4WD STL Short Bed	5.9L V8 24V TDHO	13,450 (a,s)
Ram HD 3500 Mega Cab 4WD STL Short Bed	5.9L V8 24V TDHO	15,450 (a,u)
Ram HD 2500 Power Wagon Reg. Cab 4WD Long Bed	5.7L V8	11,000 (m or a,u)
Ram HD 2500 Power Wagon Quad Cab 4WD Short Bed	5.7L V8	10,750 (m or a,u)
Ram HD SRT 10 Quad Cab	8.3L V10	8150

## FORD

Ranger Reg. Cab 2WD 6' Bed	2.3L I4	2660 (a,u)
Ranger Reg. Cab 2WD 6' Bed	3.0L V6	2660 (m,s)
Ranger Reg. Cab 2WD 6' Bed	3.0L V6	2620 (a,s)
Ranger Reg. Cab 2WD 6' Bed	3.0L V6	2500 (m,u)
Ranger Reg. Cab 2WD 6' Bed	3.0L V6	2460 (a,u)
Ranger Reg. Cab 4WD 6' Bed	3.0L V6	2340 (m,u)
Ranger Reg. Cab 4WD 6' Bed	3.0L V6	2320 (a,u)
Ranger Reg. Cab 2WD 7' Bed	3.0L V6	2560 (a,s)
Ranger Reg. Cab 2WD 7' Bed	4.0L V6	6000 (a,r)
Ranger Reg. Cab 2WD 7' Bed	4.0L V6	5680 (a,u)
Ranger Reg. Cab 4WD 7' Bed	4.0L V6	3220 (m,u)
Ranger SuperCab 2WD	3.0L V6	2340 (m,u)
Ranger SuperCab 2WD	3.0L V6	2480 (m,s)
Ranger SuperCab 2WD	3.0L V6	2440 (a,s)
Ranger SuperCab 2WD	3.0L V6	2300 (a,u)
Ranger SuperCab 2WD	4.0L V6	3400 (m,r)
Ranger SuperCab 2WD	4.0L V6	5580 (a,u)
Ranger SuperCab 2WD	4.0L V6	5860 (a,r)
Ranger SuperCab 4WD	4.0L V6	3120 (m,u)
F-150 Reg. Cab 2WD 6' Bed	4.2L V6	2400 (m,p)
F-150 Reg. Cab 2WD 6' Bed	4.2L V6	5100 (a,p)
F-150 Reg. Cab 2WD 6' Bed	4.6L V8	6500 (a,r)
F-150 Reg. Cab 2WD 6' Bed	4.6L V8	7000 (a,s)
F-150 Reg. Cab 2WD 6' Bed	5.4L V8	6900 (a,p)
F-150 Reg. Cab 2WD 6' Bed	5.4L V8	7900 (a,r)
F-150 Reg. Cab 2WD 6' Bed	5.4L V8	8400 (a,s)
F-150 Reg. Cab 2WD 8' Bed	4.2L V6	2200 (m,p)
F-150 Reg. Cab 2WD 8' Bed	4.2L V6	5000 (a,p)
F-150 Reg. Cab 2WD 8' Bed	4.6L V8	6600 (a,r)
F-150 Reg. Cab 2WD 8' Bed	4.6L V8	7100 (a,s)
F-150 Reg. Cab 2WD 8' Bed	5.4L V8	7300 (a,p)
F-150 Reg. Cab 2WD 8' Bed	5.4L V8	8700 (a,r)
F-150 Reg. Cab 2WD 8' Bed	5.4L V8	9800 (a,s)
F-150 Reg. Cab 2WD 8' Bed	5.4L V8	9900 (a,u)
F-150 Reg. Cab 4WD 6' Bed	4.6L V8	6200 (a,r)
F-150 Reg. Cab 4WD 6' Bed	4.6L V8	6700 (a,s)
F-150 Reg. Cab 4WD 6' Bed	5.4L V8	7600 (a,r)
F-150 Reg. Cab 4WD 6' Bed	5.4L V8	8100 (a,s)
F-150 Reg. Cab 4WD 8' Bed	4.6L V8	6300 (a,r)
F-150 Reg. Cab 4WD 8' Bed	4.6L V8	6800 (a,s)
F-150 Reg. Cab 4WD 8' Bed	5.4L V8	8800 (a,r)
F-150 Reg. Cab 4WD 8' Bed	5.4L V8	9500 (a,s or u)
F-150 SuperCab 2WD 5' Bed	4.6L V8	6300 (a,r)
F-150 SuperCab 2WD 5' Bed	4.6L V8	6800 (a,s)
F-150 SuperCab 2WD 5' Bed	5.4L V8	7600 (a,r)
F-150 SuperCab 2WD 5' Bed	5.4L V8	8100 (a,s)
F-150 SuperCab 2WD 6' Bed	4.6L V8	6400 (a,r)
F-150 SuperCab 2WD 6' Bed	4.6L V8	6900 (a,s)
F-150 SuperCab 2WD 6' Bed	5.4L V8	8600 (a,r)
F-150 SuperCab 2WD 6' Bed	5.4L V8	9500 (a,s)
F-150 SuperCab 2WD 8' Bed	5.4L V8	9500 (a,u)
F-150 SuperCab 4WD 5' Bed	4.6L V8	6000 (a,r)
F-150 SuperCab 4WD 5' Bed	4.6L V8	6500 (a,s)
F-150 SuperCab 4WD 5' Bed	5.4L V8	7300 (a,r)
F-150 SuperCab 4WD 5' Bed	5.4L V8	7800 (a,s)
F-150 SuperCab 4WD 6' Bed	4.6L V8	6100 (a,r)
F-150 SuperCab 4WD 6' Bed	4.6L V8	6600 (a,s)
F-150 SuperCab 4WD 6' Bed	5.4L V8	8300 (a,r)
F-150 SuperCab 4WD 6' Bed	5.4L V8	9300 (a,s)
F-150 SuperCab 4WD 8' Bed	5.4L V8	9300 (a,u)
F-150 SuperCrew 2WD	4.6L V8	6300 (a,r)
F-150 SuperCrew 2WD	4.6L V8	6800 (a,s)
F-150 SuperCrew 2WD	5.4L V8	8500 (a,r)
F-150 SuperCrew 2WD	5.4L V8	9500 (a,s)
F-150 SuperCrew 4WD	4.6L V8	6000 (a,r)
F-150 SuperCrew 4WD	4.6L V8	6500 (a,s)
F-150 SuperCrew 4WD	5.4L V8	8200 (a,r)
F-150 SuperCrew 4WD	5.4L V8	9200 (a,s)
F-150 SVT Lightning	5.4L V8	5000
F-250/F-350 Super Duty Reg. Cab 2WD	5.4L V8	9100 (m,s)

VEHICLE	ENGINE	TOW RATING
F-250/F-350 Super Duty Reg. Cab 2WD	5.4L V8	10,100 (a,s)
F-250/F-350 Super Duty Reg. Cab 2WD	5.4L V8	11,100 (m,u)
F-250/F-350 Super Duty Reg. Cab 2WD	5.4L V8	12,100 (a,u)
F-250/F-350 Super Duty Reg. Cab 2WD	6.8L V10	12,500 (a or m,u)
F-250/F-350 Super Duty Reg. Cab 2WD	6.0L V8 TD	12,500 (a or m,s)
F-250/F-350 Super Duty Reg. Cab 4WD	5.4L V8	8700 (m,s)
F-250/F-350 Super Duty Reg. Cab 4WD	5.4L V8	9700 (a,s)
F-250/F-350 Super Duty Reg. Cab 4WD	5.4L V8	10,700 (m,u)
F-250/F-350 Super Duty Reg. Cab 4WD	5.4L V8	11,700 (a,u)
F-250/F-350 Super Duty Reg. Cab 4WD	6.8L V10	12,500 (a or m,u)
F-250/F-350 Super Duty Reg. Cab 4WD	6.0L V8 TD	12,500 (a or m,s)
F-250/F-350 Super Duty SuperCab 2WD	5.4L V8	8800 (m,s)
F-250/F-350 Super Duty SuperCab 2WD	5.4L V8	9800 (a,s)
F-250/F-350 Super Duty SuperCab 2WD	5.4L V8	10,800 (m,u)
F-250/F-350 Super Duty SuperCab 2WD	5.4L V8	11,800 (a,u)
F-250/F-350 Super Duty SuperCab 2WD	6.8L V10	12,500 (a or m,u)
F-250/F-350 Super Duty SuperCab 2WD	6.0L V8 TD	12,500 (a or m,s)
F-250/F-350 Super Duty SuperCab 4WD	5.4L V8	8300 (m,s)
F-250/F-350 Super Duty SuperCab 4WD	5.4L V8	9300 (a,s)
F-250/F-350 Super Duty SuperCab 4WD	5.4L V8	10,300 (m,u)
F-250/F-350 Super Duty SuperCab 4WD	5.4L V8	11,300 (a,u)
F-250/F-350 Super Duty SuperCab 4WD	6.8L V10	12,500 (a or m,u)
F-250/F-350 Super Duty SuperCab 4WD	6.0L V8 TD	12,500 (a or m,s)
F-250/F-350 Super Duty Crew Cab 2WD	5.4L V8	8600 (m,s)
F-250/F-350 Super Duty Crew Cab 2WD	5.4L V8	9600 (a,s)
F-250/F-350 Super Duty Crew Cab 2WD	5.4L V8	10,600 (m,u)
F-250/F-350 Super Duty Crew Cab 2WD	5.4L V8	11,600 (a,u)
F-250/F-350 Super Duty Crew Cab 2WD	6.8L V10	12,500 (a or m,u)
F-250/F-350 Super Duty Crew Cab 2WD	6.0L V8 TD	12,500 (a or m,s)
F-250/F-350 Super Duty Crew Cab 4WD	5.4L V8	8100 (m,s)
F-250/F-350 Super Duty Crew Cab 4WD	5.4L V8	9100 (a,s)
F-250/F-350 Super Duty Crew Cab 4WD	5.4L V8	10,100 (m,u)
F-250/F-350 Super Duty Crew Cab 4WD	5.4L V8	11,100 (a,u)
F-250/F-350 Super Duty Crew Cab 4WD	6.8L V10	12,500 (a or m,u)
F-250/F-350 Super Duty Crew Cab 4WD	6.0L V8 TD	12,500 (a or m,s)
F-350 Super Duty Reg. Cab 2WD Dually	5.4L V8	11,300 (m,u)
F-350 Super Duty Reg. Cab 2WD Dually	5.4L V8	12,300 (a,u)
F-350 Super Duty Reg. Cab 2WD Dually	6.8L V10	14,100 (m,u)
F-350 Super Duty Reg. Cab 2WD Dually	6.8L V10	15,000 (a,u)
F-350 Super Duty Reg. Cab 2WD Dually	6.0L V8 TD	15,000 (a or m, s or u)
F-350 Super Duty Reg. Cab 4WD Dually	5.4L V8	10,800 (m,u)
F-350 Super Duty Reg. Cab 4WD Dually	5.4L V8	11,800 (a,u)
F-350 Super Duty Reg. Cab 4WD Dually	6.8L V10	13,700 (m,u)
F-350 Super Duty Reg. Cab 4WD Dually	6.8L V10	14,700 (a,u)
F-350 Super Duty Reg. Cab 4WD Dually	6.0L V8 TD	15,000 (a or m, s or u)
F-350 Super Duty SuperCab 2WD Dually	5.4L V8	10,900 (m,u)
F-350 Super Duty SuperCab 2WD Dually	5.4L V8	11,900 (a,u)
F-350 Super Duty SuperCab 2WD Dually	6.8L V10	13,800 (m,u)
F-350 Super Duty SuperCab 2WD Dually	6.8L V10	14,800 (a,u)
F-350 Super Duty SuperCab 2WD Dually	6.0L V8 TD	15,000 (a or m, s or u)
F-350 Super Duty Super Cab 4WD Dually	5.4L V8	10,500 (m,u)
F-350 Super Duty Super Cab 4WD Dually	5.4L V8	11,500 (a,u)
F-350 Super Duty Super Cab 4WD Dually	6.8L V10	13,300 (m,u)
F-350 Super Duty Super Cab 4WD Dually	6.8L V10	14,300 (a,u)
F-350 Super Duty Super Cab 4WD Dually	6.0L V8 TD	15,000 (a or m, s or u)
F-350 Super Duty Crew Cab 2WD Dually	6.8L V10	13,600 (m,u)
F-350 Super Duty Crew Cab 2WD Dually	6.8L V10	14,700 (a,u)
F-350 Super Duty Crew Cab 2WD Dually	6.0L V8 TD	15,000 (a or m, s or u)
F-350 Super Duty Crew Cab 4WD Dually	6.8L V10	13,100 (m,u)
F-350 Super Duty Crew Cab 4WD Dually	6.8L V10	14,200 (a,u)
F-350 Super Duty Crew Cab 4WD Dually	6.0L V8 TD	15,000 (a or m, s or u)
Escape 2WD/4WD	3.0L V6	3500 (z)
Explorer 2WD	4.0L V6	3110 (a,r,z)
Explorer 2WD	4.0L V6	5390 (a,s,z)
Explorer 2WD	4.6L V8	3020 (a,r,z)
Explorer 2WD	4.6L V8	7300 (a,s,z)
Explorer 4WD	4.0L V6	3230 (a,r,z)
Explorer 4WD	4.0L V6	5210 (a,s,z)
Explorer 4WD	4.6L V8	3140 (a,r,z)
Explorer 4WD	4.6L V8	7120 (a,s,z)
Explorer Sport Trac 2WD	4.0L V6	5330 (z)
Explorer Sport Trac 4WD	4.0L V6	5080 (z)
Expedition 2WD	5.4L V8	8900 (z)
Expedition 4WD	5.4L V8	8600 (z)
Excursion 2WD	5.4L V8	6100 (a,s,z)
Excursion 2WD	5.4L V8	7600 (a,u,z)
Excursion 4WD	5.4L V8	7200 (a,u,z)
Excursion 2WD	6.8L V10	10,000 (a,s,z)



VEHICLE	ENGINE	TOW RATING
Excursion 2WD/4WD	6.0L V10	11,000 (a,v,z)
Excursion 4WD	6.8L V10	9600 (a,s,z)
Excursion 2WD/4WD	6.0L V8 TD	11,000 (a,s,z)
E-150 Van	4.6L V8	6500 (a,r)
E-150 Van	5.4L V8	6900 (a,r)
E-250 Van	4.6L V8	6100 (a,s)
E-250 Van	4.6L V8	6600 (a,u)
E-250 Van	5.4L V8	7500 (a,s)
E-250 Extended Van	4.6L V8	6000 (a,s)
E-250 Extended Van	4.6L V8	6400 (a,u)
E-250 Extended Van	5.4L V8	7300 (a,s)
E-350 Super Duty Van	5.4L V8	6300 (a,r)
E-350 Super Duty Van	5.4L V8	7300 (a,u)
E-350 Super Duty Van	6.8L V10	9200 (a,s)
E-350 Super Duty Van	6.8L V10	10,000 (a,u)
E-350 Super Duty Van	6.0L V8 TD	9700 (a,r)
E-350 Super Duty Van	6.0L V8 TD	10,000 (a,u)
E-350 Super Duty Ext. Van	5.4L V8	6200 (a,r)
E-350 Super Duty Ext. Van	5.4L V8	7200 (a,u)
E-350 Super Duty Ext. Van	6.8L V10	9000 (a,s)
E-350 Super Duty Ext. Van	6.8L V10	10,000 (a,u)
E-350 Super Duty Ext. Van	6.0L V8 TD	9500 (a,r)
E-350 Super Duty Ext. Van	6.0L V8 TD	10,000 (a,u)
E-150 Wagon	4.6L V8	6100 (a,r)
E-150 Wagon	5.4L V8	6500 (a,r)
E-350 Super Duty Wagon	5.4L V8	7000 (a,s)
E-350 Super Duty Wagon	6.8L V10	8800 (a,s)
E-350 Super Duty Wagon	6.8L V10	10,000 (a,u)
E-350 Super Duty Wagon	6.0L V8 TD	9300 (a,r)
E-350 Super Duty Wagon	6.0L V8 TD	10,000 (a,u)
E-350 Super Duty Ext. Wagon	5.4L V8	6700 (a,s)
<b>HONDA</b>		
Odyssey	3.5L V6	3500 (z)
Pilot	3.5L V6	3500 (z)
Pilot	3.5L V6	4500 (b,z)
Ridgeline	3.5L V6	5000 (z)
<b>HUMMER</b>		
H1 Alpha Four Door Wagon	6.6L V8 TD	7409
H2	6.0L V8	7000
H2 SUT	6.0L V8	7000
H3	3.5L I5	3000 (m)
H3	3.5L I5	4500 (a)
<b>HYUNDAI</b>		
Tuscon	2.7L V6	2000 (x)
Santa Fe 2WD	2.7L V6	2700 (x)
Santa Fe 2WD	3.5L V6	3000 (x)
Santa Fe 4WD	2.7L V6	2200 (x)
Santa Fe 4WD	3.5L V6	2500 (x)



VEHICLE	ENGINE	TOW RATING
Impreza	2.5L H4	2000
Legacy	2.5L H4	2700
Legacy	2.5L H4 Turbo	2700
Outback	2.5L H4	2700
Outback	2.5L H4 Turbo	2700
Outback	3.0L H6	3000

**SUZUKI**

Grand Vitara	2.7L V6	3000
XL7 2WD/4WD	2.7L V6	3000

**TOYOTA**

Highlander 2WD/4WD	2.4L I4	3000 (z)
Highlander 2WD/4WD	3.3L V6	3500 (z)
Land Cruiser	4.7L V8	6500
Sienna	4.7L V8	3500
Sequoia 2WD	4.7L V8	6500
Sequoia 4WD	4.7L V8	6200
Tacoma Reg. Cab 2WD/4WD	2.7L I4	3500 (z)
Tacoma Access Cab 2WD/4WD	2.7L I4	3500 (z)
Tacoma Access Cab 4WD	4.0L V6	6500 (z)
Tacoma Double Cab	2.7L I4	3500 (z)
Tacoma Double Cab	4.0L V6	6500 (z)
Tundra Reg. Cab 2WD	4.0L V6	5000
Tundra Reg. Cab 2WD	4.7L V8	7100
Tundra Reg. Cab 4WD	4.7L V8	7100
Tundra Access Cab 2WD	3.4L V6	4800
Tundra Access Cab 2WD	4.7L V8	7100
Tundra Access Cab 4WD	4.7L V8	6900
Tundra Step Side 2WD	4.7L V8	7100
Tundra Step Side 4WD	4.7L V8	6900
Tundra Double Cab 2WD	4.7L V8	6800
Tundra Double Cab 4WD	4.7L V8	6500
4Runner 2WD/4WD	4.0L V6	5000
4Runner 2WD	4.0L V6	6700 (z)
4Runner 2WD	4.7L V8	7300 (z)
4Runner 4WD	4.0L V6	6400 (z)
4Runner 4WD	4.7L V8	7000 (z)

**VOLKSWAGEN**

Touareg 4WD	All	7716 (x)
-------------	-----	----------

**VOLVO**

S 40 2WD	All	2000
S 40 AWD	2.5L I5 Turbo	2000
S 60 2WD	All	3300
S 60 AWD	2.5L I5 Turbo	3300
S 80 2WD	2.5L I5 Turbo	3300
S 80 AWD	2.5L I5 Turbo	3300
V 50 2WD	All	2000
V 50 AWD	2.5L I5 Turbo	2000
V 70	All	3300
XC 70 AWD	2.5L I5 Turbo	3300
XC 90	All	5000



Saab 9-7X

## State Tow Laws

As published in AAA's 71st Edition  
Digest of Motor Laws.

State <sup>1</sup>	Max. Towing Speed (mph)	Max. Trailer Length	Max. Trailer Width	Max. Trailer Height	Max. Overall Length	Weight Requiring Trailer Brakes (lbs.)
Alabama	65	40'	8'	13' 6"	N/S	3000
Alaska	45	40'	8' 6"	14'	75'	5000
Arizona	55	40'	8'	13' 6"	65'	3000
Arkansas	70	53' 6"	8' 6"	13' 6"	65'	3000
California	55	40'	8' 6"	14'	65'	1500 <sup>2</sup>
Colorado	65	N/S	8' 6"	14' 6"	70'	3000
Connecticut	65	N/S	8' 6"	13' 6"	60'	3000
Delaware	55	40'	8' 6"	13' 6"	65'	N/S
Dist. of Columbia	55	60'	N/S	13' 6"	85'	3000
Florida	65	40'	8' 6"	13' 6"	65'	3000
Georgia	55	N/S	8' 6"	13' 6"	60'	3000
Hawaii	50	40'	9'	14'	65'	3000
Idaho	75	48'	8' 6"	14'	75'	1500
Illinois	55	60'	8'	13' 6"	65'	3000
Indiana	55	N/S	8' 6"	13' 6"	65'	3000
Iowa	65	N/S	8'	14'	70'	3000
Kansas	55	N/S	8' 6"	14'	65'	N/S
Kentucky	65	N/S	8'	13' 6"	63'	N/S
Louisiana	70	40'	8'	13' 6"	70'	3000
Maine	65	48'	8' 6"	13' 6"	65'	3000
Maryland	65	40'	8'	13' 6"	55'	3000
Massachusetts	65	40'	8' 6"	13' 6"	65'	N/S
Michigan	55	45'	8' 6"	12' 6"	65'	3000
Minnesota	65	45'	8' 6"	13' 6"	60'	3000
Mississippi	55	40'	8' 6"	13' 6"	53'	2000
Missouri	60	N/S	8'	13' 6"	55'	N/S
Montana	65	N/S	8' 6"	14'	65'	3000
Nebraska	65	40'	8' 6"	14' 6"	65'	3000
Nevada	65	N/S	8'	14'	70'	3000
New Hampshire	65	48'	8' 6"	13' 6"	N/S	N/S
New Jersey	55	40'	8' 6"	13' 6"	50'	N/S
New Mexico	75	40'	8' 6"	14'	75'	3000
New York	65	48'	8'	13' 6"	65'	3000
North Carolina	55	35'	8'	13' 6"	60'	4000
North Dakota	70	53'	8' 6"	14'	75'	N/S
Ohio	55	40'	8' 6"	13' 6"	65'	2000
Oklahoma	70	40'	8' 6"	13' 6"	65'	3000
Oregon	55	45'	8' 6"	14'	65'	N/S
Pennsylvania	55	N/S	8' 6"	13' 6"	60'	3000
Rhode Island	55	N/S	8' 6"	13' 6"	60'	4000
South Carolina	55	48'	8' 6"	13' 6"	N/S	3000
South Dakota	75	N/S	N/S	14'	N/S	3000
Tennessee	70	N/S	8' 6"	13' 6"	N/S	3000
Texas	65	N/S	8' 6"	13' 6"	65'	4500
Utah	65	40'	8' 6"	14'	65'	N/S
Vermont	55	45'	8' 6"	13' 6"	65'	3000
Virginia	65	45'	8' 6"	13' 6"	65'	3000
Washington	60	N/S	8' 6"	14'	60'	3000
West Virginia	55	40'	8'	13' 6"	75'	3000
Wisconsin	65	N/S	8' 6"	13' 6"	60'	3000
Wyoming	60	45'	8' 6"	14'	65'	N/S

<sup>1</sup> Trailer Boats advises readers to check with state or provincial motor vehicle departments for specifics, exceptions and updates for the areas you plan to travel through. For example, maximum towing speed limits generally apply to major urban interstates, but may be faster or slower on certain roadways.

<sup>2</sup> Editor's note: Applies to trailer coaches and camp trailers. Limit for boat trailers is 3000 pounds. N/S = Not Specified



Mitsubishi Raider